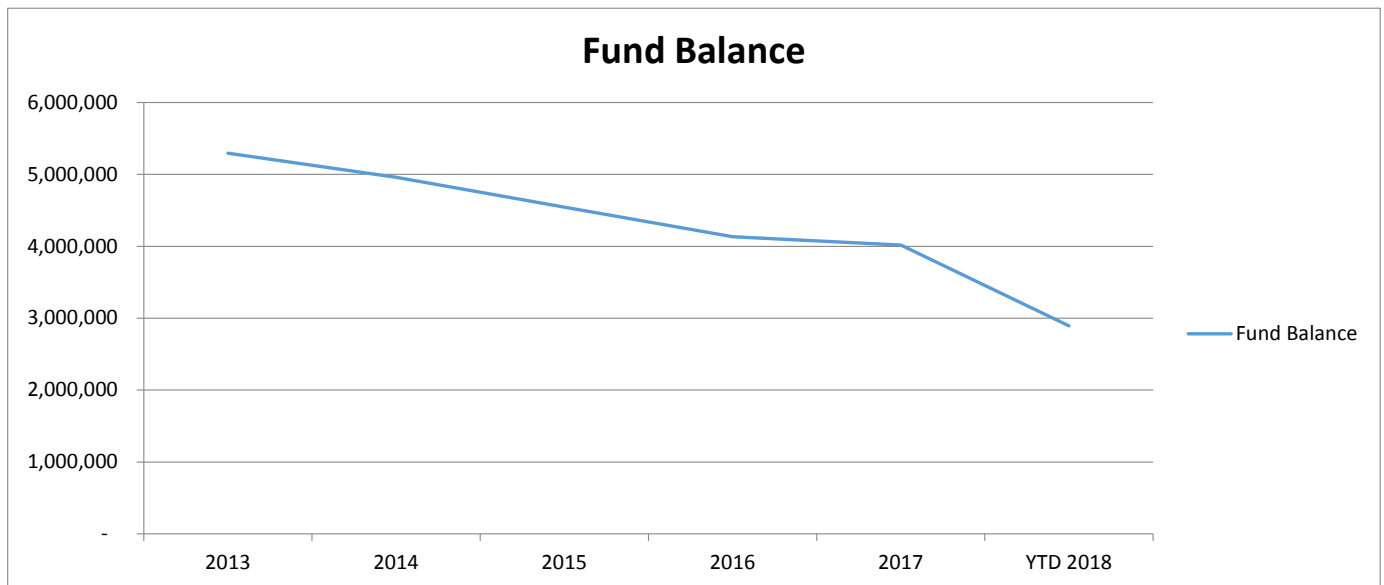


# Aitkin County Health and Human Services

## 5-Year Trend

	2013	2014	2015	2016	2017	YTD 2018
<b>Fund Balance</b>	5,295,266	4,959,306	4,544,194	4,132,946	4,018,905	2,892,802

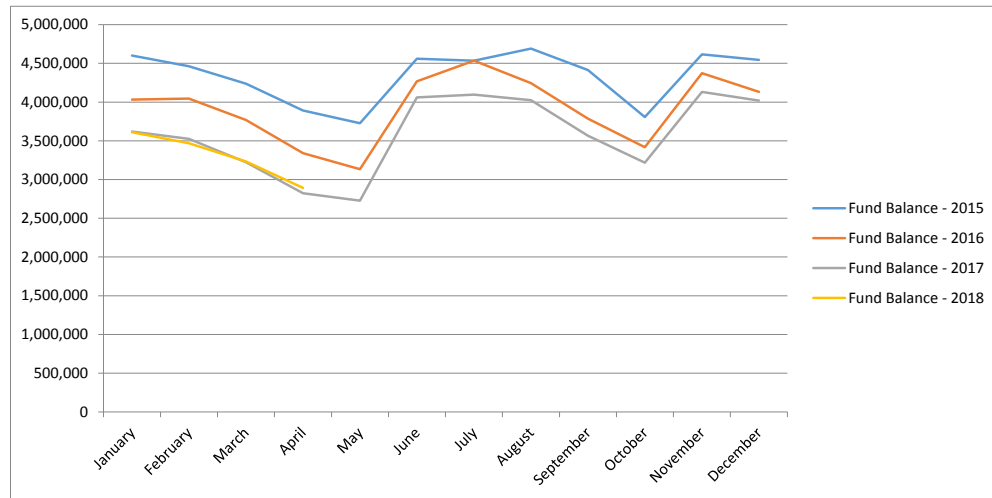
	2013	2014	2015	2016	2017	YTD 2018
<b>Revenue:</b>						
Tax Levy	(2,470,280)	(1,888,237)	(1,982,478)	(2,376,726)	(2,553,009)	-
Intergovernmental Revenue	(314,824)	(270,042)	(279,448)	(207,004)	(179,511)	-
State Revenue	(686,351)	(881,137)	(1,043,277)	(1,062,714)	(1,140,452)	(205,662)
Federal Revenue	(2,136,553)	(2,168,616)	(2,084,504)	(2,047,014)	(2,222,386)	(588,694)
Third Party Revenue	(216,749)	(207,346)	(258,635)	(341,275)	(355,350)	(89,928)
Misc. Revenue/Pass Thru	(359,291)	(315,012)	(388,502)	(311,493)	(197,534)	(79,772)
<b>Expenditure:</b>						
Payments for Recipients	1,417,258	1,635,621	1,719,526	1,881,399	1,793,401	496,147
Payroll	3,425,849	3,664,934	3,934,931	4,102,280	4,272,534	1,353,333
Services/Charges and Fees	423,064	336,723	343,675	347,003	370,495	108,364
Travel and Insurance	89,679	143,562	156,611	155,526	90,227	47,638
Supplies and Small Equipment	61,402	73,199	110,486	100,869	113,538	20,599
Capital Outlay	52,492	31,266	38,483	48,764	25,644	-
Misc. Expenditure/Pass Thru	184,723	180,414	150,934	120,507	96,846	27,871
<b>Net Change to Fund Balance:</b>	<b>(529,581)</b>	<b>335,329</b>	<b>417,802</b>	<b>410,121</b>	<b>114,444</b>	<b>1,089,895</b>



**Aitkin County Health and Human Services**  
**Financial Statement for Board**

	January	February	March	April	May	June	July	August	September	October	November	December
<b>Fund Balance - 2015</b>	4,600,651	4,463,903	4,236,061	3,892,021	3,727,220	4,560,231	4,534,967	4,690,698	4,413,847	3,806,907	4,615,850	4,544,194
<b>Fund Balance - 2016</b>	4,031,619	4,044,030	3,768,001	3,340,621	3,133,611	4,268,703	4,534,967	4,244,044	3,785,410	3,417,297	4,372,735	4,132,946
<b>Fund Balance - 2017</b>	3,619,229	3,524,864	3,223,404	2,822,304	2,727,519	4,060,299	4,095,282	4,024,250	3,565,913	3,217,691	4,131,280	4,018,905
<b>Fund Balance - 2018</b>	3,611,051	3,469,435	3,233,426	2,892,802								

	Jan-18	Feb-18	Mar-18	Apr-18	May-18	Jun-18	Jul-18	Aug-18	Sep-18	Oct-18	Nov-18	Dec-18	YTD 2018
<b>Revenue:</b>													
Tax Levy	0	0	0	0									0
Intergovernmental Revenue	0	0	0	0									0
State Revenue	(8,065)	(81,475)	(116,121)	0									(205,662)
Federal Revenue	(38,351)	(199,063)	(351,280)	0									(588,694)
Third Party Revenue	(24,515)	(33,823)	(31,590)	0									(89,928)
Misc. Revenue/Pass Thru	(19,061)	(39,025)	(21,366)	(320)									(79,772)
<b>Expenditure:</b>													
Payments for Recipients	113,055	137,421	137,323	108,348									496,147
Payroll	339,347	356,603	471,687	185,697									1,353,333
Services/Charges and Fees	32,651	32,692	20,692	22,329									108,364
Travel and Insurance	38,484	2,215	3,495	3,444									47,638
Supplies and Small Equipment	2,753	6,911	2,692	8,243									20,599
Capital Outlay	0	0	0	0									0
Misc. Expenditure/Pass Thru	2,467	9,880	4,642	10,883									27,871
<b>Net:</b>	<b>438,765</b>	<b>192,334</b>	<b>120,173</b>	<b>338,624</b>	<b>0</b>	<b>0</b>	<b>0</b>	<b>0</b>	<b>0</b>	<b>0</b>	<b>0</b>	<b>0</b>	<b>1,089,895</b>



## Foster Care Report

	2006	2007	2008	2009	2010	2011	2012	2013	2014	2015	2016	2017	2018
<b>Foster Care Expense</b>	847,823	818,453	834,512	950,273	970,888	886,243	816,028	590,994	628,755	626,426	686,956	723,125	132,584
<b># of Children</b>	73	75	63	64	57	56	49	50	53	65	62	71	
<b>Foster Care</b>	<b>2006</b>	<b>2007</b>	<b>2008</b>	<b>2009</b>	<b>2010</b>	<b>2011</b>	<b>2012</b>	<b>2013</b>	<b>2014</b>	<b>2015</b>	<b>2016</b>	<b>2017</b>	<b>2018</b>
Child Shelter	3,017	5,139	0	850	0	177	2,696	2,817	0	1,071	2,384	0	0
ICWA	2,448	0	0	709	0	0	0	0	0	0	0	0	0
Corrections	35,626	6,465	5,444	4,227	9,488	2,656	6,151	1,378	1,968	0	0	0	0
<b>Treatment Foster Care</b>	0	8,451	0	0	33,227	101,130	96,216	79,138	35,418	18,948	0	0	0
ICWA	0	0	0	0	0	0	0	0	0	7,870	18,632	11,055	7,468
Corrections	0	0	33,530	33,811	22,857	0	0	0	0	0	0	0	0
<b>Child Foster Care</b>	318,577	462,600	384,829	396,552	346,845	167,154	174,298	241,526	158,688	190,403	289,650	234,738	94,982
ICWA	49,915	101,147	131,779	99,413	111,278	138,816	92,451	11,382	24,570	52,441	72,284	63,041	3,966
Corrections	19,740	0	0	0	18,695	11,627	9,783	0	1,998	10,011	0	0	0
<b>Rule 8</b>	53,677	12,310	3,174	19,938	14,710	45,321	7,062	0	100	35,955	0	25,692	0
ICWA	0	0	23,947	10,952	48,097	16,400	25,716	7,306	888	0	0	0	0
Corrections	0	18,675	8,132	44,677	13,373	17,570	43,317	0	0	0	0	0	0
<b>Correction Facilities</b>	0	0	0	0	0	0	0	24,953	0	0	0	83,298	22,893
ICWA	37,418	46,204	35,438	68,751	103,404	107,921	56,691	21,011	68,770	27,341	47,201	890	100
Corrections	264,032	141,084	107,867	120,751	66,821	208,353	188,862	142,442	292,193	142,279	149,222	0	0
<b>Northstar Kinship Assistance</b>	0	0	0	0	0	0	0	0	0	0	1,973	0	3,024
<b>Northstar Adoption Assistance</b>	0	0	0	0	0	0	0	0	0	0	0	0	8,156
<b>Extended Foster Care</b>	0	0	0	0	0	1,228	0	0	100	0	0	3,960	0
<b>Electronic Monitoring</b>	976	1,848	0	1,504	1,201	0	352	2,904	0	0	0	0	0
<b>Rule 5</b>	56,466	0	61,170	95,415	103,210	70,889	99,575	21,835	119,466	96,403	139,532	301,090	7,579
ICWA	0	7,175	36,321	42,836	36,960	0	0	36,571	0	48,012	27,891	0	0
Corrections	0	0	0	0	0	0	0	0	0	0	0	0	0
<b>Respite</b>	428	115	882	7,862	34,851	8,645	9,183	2,358	919	5,765	1,276	2,356	0
<b>Child Care</b>	1,406	2,178	0	671	1,579	1,167	0	718	592	4,495	981	179	0
<b>Health Services</b>	386	695	0	455	82	194	382	111	2,607	3,108	195	132	0
<b>Transportation</b>	4,436	5,897	5,464	10,803	9,584	10,268	7,188	14,129	9,790	7,789	6,098	10,864	1,138
<b>Total Foster Care Expenses:</b>	<b>848,548</b>	<b>819,983</b>	<b>837,977</b>	<b>960,176</b>	<b>976,259</b>	<b>909,516</b>	<b>819,923</b>	<b>610,578</b>	<b>718,066</b>	<b>651,892</b>	<b>757,319</b>	<b>737,293</b>	<b>149,307</b>

### Foster Care Expense

