

PLAT OF BUCK'S ADD.

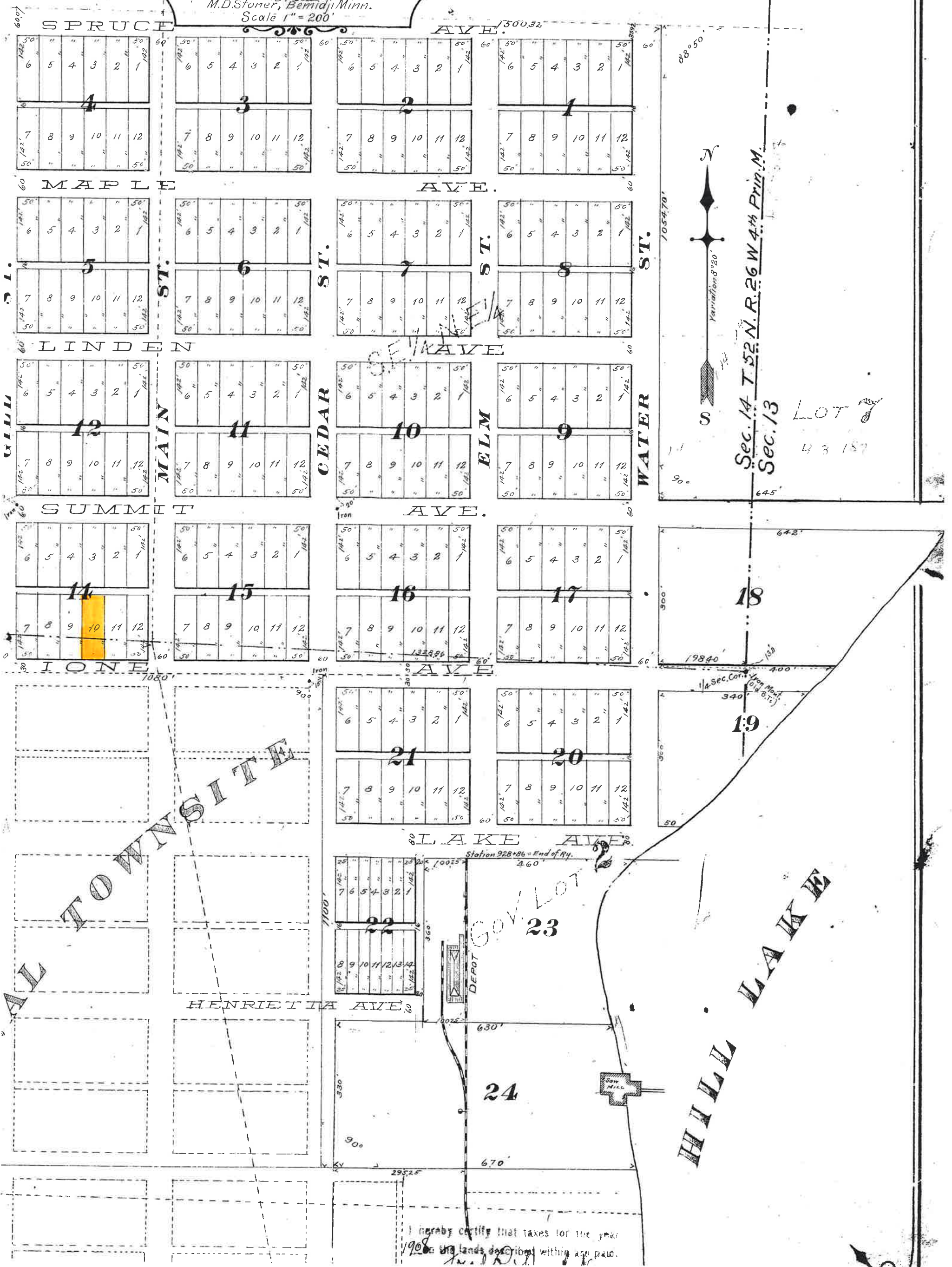
TO HILL CITY

AITKIN CO. MINN.

SURVEYED IN DEC. 1908
BY M.D. Stoner, Bemidji Minn.

Scale 1" = 200'

J. B. Lemile
May 4



Sec. 14 T. 52 N. R. 26 W. 4th Prin. M.
Sec. 13

LOT 7
43 187

I hereby certify that taxes for the year
1908 on the lands described within are paid.