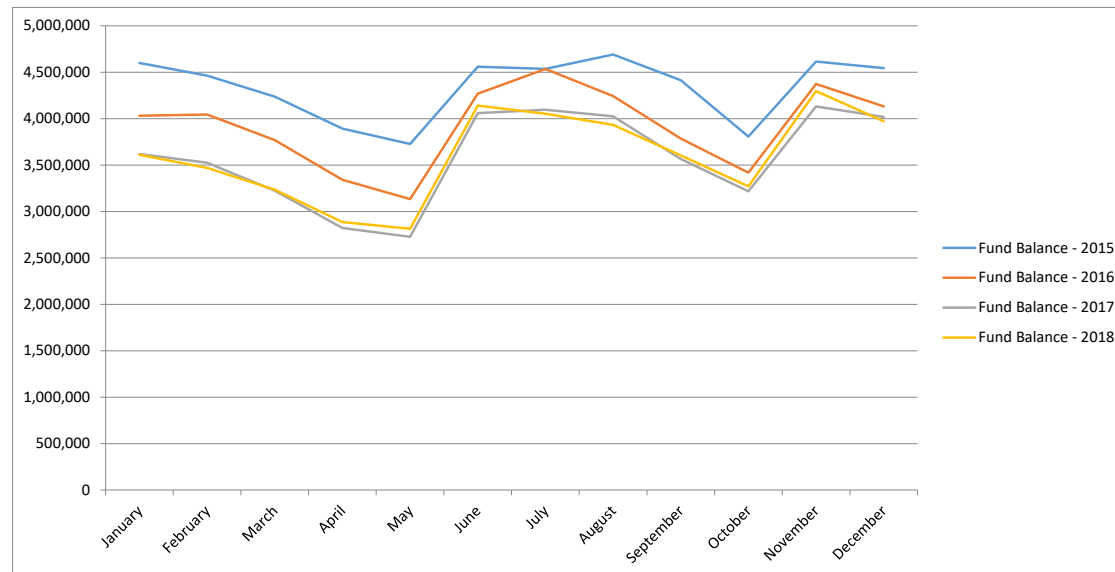


Aitkin County Health and Human Services
Financial Statement for Board

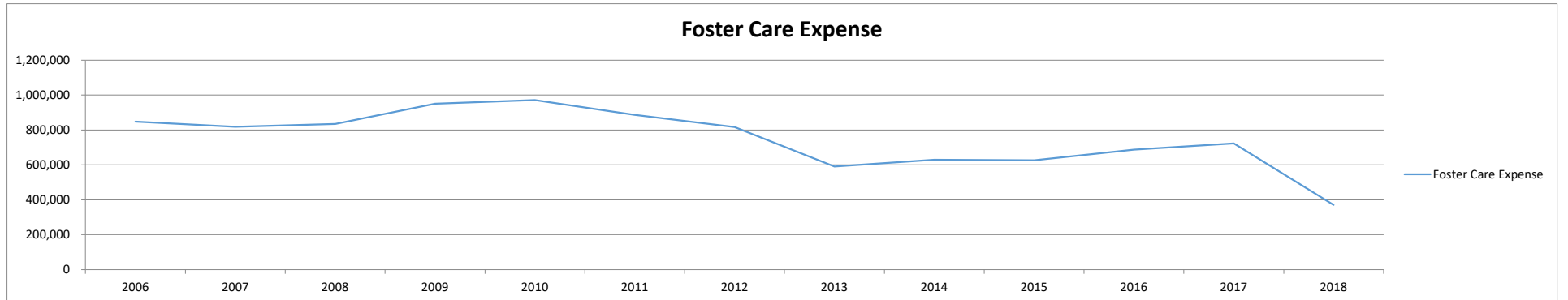
	January	February	March	April	May	June	July	August	September	October	November	December
Fund Balance - 2015	4,600,651	4,463,903	4,236,061	3,892,021	3,727,220	4,560,231	4,534,967	4,690,698	4,413,847	3,806,907	4,615,850	4,544,194
Fund Balance - 2016	4,031,619	4,044,030	3,768,001	3,340,621	3,133,611	4,268,703	4,534,967	4,244,044	3,785,410	3,417,297	4,372,735	4,132,946
Fund Balance - 2017	3,619,229	3,524,864	3,223,404	2,822,304	2,727,519	4,060,299	4,095,282	4,024,250	3,565,913	3,217,691	4,131,280	4,018,905
Fund Balance - 2018	3,611,051	3,469,435	3,233,426	2,886,928	2,813,898	4,140,160	4,052,414	3,933,909	3,604,831	3,269,988	4,296,888	3,971,517

	Jan-18	Feb-18	Mar-18	Apr-18	May-18	Jun-18	Jul-18	Aug-18	Sep-18	Oct-18	Nov-18	Dec-18	YTD 2018
Revenue:													6,509,713
Tax Levy	0	0	0	0	0	(1,519,466)	0	0	0	0			
Intergovernmental Revenue	0	0	0	0	0	0	(19,034)	(3,907)	(22,670)	0			
State Revenue	(8,065)	(81,475)	(116,121)	(2,494)	(89,836)	(135,262)	(303,153)	(183,816)	(52,866)	(7,912)			
Federal Revenue	(38,351)	(199,063)	(351,280)	(35,625)	(267,139)	(251,761)	(80,144)	(307,940)	(85,980)	(45,533)			
Third Party Revenue	(24,515)	(33,823)	(31,590)	(39,049)	(9,689)	(36,100)	(55,123)	(25,651)	(30,740)	(31,353)			
Misc. Revenue/Pass Thru	(19,061)	(39,025)	(21,366)	(15,602)	(14,489)	(36,005)	(7,922)	(13,366)	(3,089)	(39,107)			
Expenditure:													6,604,566
Payments for Recipients	113,055	137,421	137,323	110,992	142,911	112,050	158,028	112,540	123,896	122,204			
Payroll	339,347	356,603	471,687	329,041	344,172	346,934	348,082	486,695	346,192	355,281			
Services/Charges and Fees	32,651	32,692	20,692	32,347	17,063	23,734	29,074	33,402	23,323	27,541			
Travel and Insurance	38,484	2,215	3,495	5,342	5,096	4,043	3,384	5,220	3,008	3,678			
Supplies and Small Equipment	2,753	6,911	2,692	16,279	9,759	8,284	2,625	7,606	15,849	19,637			
Capital Outlay	0	0	0	412	0	0	0	914	0	1,643			
Misc. Expenditure/Pass Thru	2,467	9,880	4,642	11,403	10,125	15,846	11,387	8,453	11,344	2,334			
Net:	438,765	192,334	120,173	413,046	147,974	(1,467,702)	87,205	120,149	328,266	408,413	0	0	13,853



	2006	2007	2008	2009	2010	2011	2012	2013	2014	2015	2016	2017	2018
Foster Care Expense	847,823	818,453	834,512	950,273	970,888	886,243	816,028	590,994	628,755	626,426	686,956	723,125	370,311
# of Children	73	75	63	64	57	56	49	50	53	65	62	71	42

	2006	2007	2008	2009	2010	2011	2012	2013	2014	2015	2016	2017	2018
Foster Care													
Child Shelter	3,017	5,139	0	850	0	177	2,696	2,817	0	1,071	2,384	0	0
ICWA	2,448	0	0	709	0	0	0	0	0	0	0	0	0
Corrections	35,626	6,465	5,444	4,227	9,488	2,656	6,151	1,378	1,968	0	0	0	0
Treatment Foster Care	0	8,451	0	0	33,227	101,130	96,216	79,138	35,418	18,948	0	0	0
ICWA	0	0	0	0	0	0	0	0	0	7,870	18,632	11,055	7,966
Corrections	0	0	33,530	33,811	22,857	0	0	0	0	0	0	0	0
Family Foster Care	318,577	462,600	384,829	396,552	346,845	167,154	174,298	241,526	158,688	190,403	289,650	234,738	242,772
ICWA	49,915	101,147	131,779	99,413	111,278	138,816	92,451	11,382	24,570	52,441	72,284	63,041	19,072
Corrections	19,740	0	0	0	18,695	11,627	9,783	0	1,998	10,011	0	0	0
Rule 8 - Group Home	53,677	12,310	3,174	19,938	14,710	45,321	7,062	0	100	35,955	0	25,692	0
ICWA	0	0	23,947	10,952	48,097	16,400	25,716	7,306	888	0	0	0	0
Corrections	0	18,675	8,132	44,677	13,373	17,570	43,317	0	0	0	0	0	0
Correction Facilities	0	0	0	0	0	0	0	24,953	0	0	0	83,298	69,350
ICWA	37,418	46,204	35,438	68,751	103,404	107,921	56,691	21,011	68,770	27,341	47,201	890	28,018
Corrections	264,032	141,084	107,867	120,751	66,821	208,353	188,862	142,442	292,193	142,279	149,222	0	0
Northstar Kinship Assistance	0	0	0	0	0	0	0	0	0	0	1,973	0	10,796
Northstar Adoption Assistance	0	0	0	0	0	0	0	0	0	0	0	0	18,107
Extended Foster Care	0	0	0	0	0	1,228	0	0	100	0	0	3,960	244
Electronic Monitoring	976	1,848	0	1,504	1,201	0	352	2,904	0	0	0	0	0
Rule 5 - Residential Treatment	56,466	0	61,170	95,415	103,210	70,889	99,575	21,835	119,466	96,403	139,532	301,090	7,579
ICWA	0	7,175	36,321	42,836	36,960	0	0	36,571	0	48,012	27,891	0	0
Corrections	0	0	0	0	0	0	0	0	0	0	0	0	0
Respite	428	115	882	7,862	34,851	8,645	9,183	2,358	919	5,765	1,276	2,356	271
Child Care	1,406	2,178	0	671	1,579	1,167	0	718	592	4,495	981	179	0
Health Services	386	695	0	455	82	194	382	111	2,607	3,108	195	132	0
Transportation	4,436	5,897	5,464	10,803	9,584	10,268	7,188	14,129	9,790	7,789	6,098	10,864	4,388
Total Foster Care Expenses:	848,548	819,983	837,977	960,176	976,259	909,516	819,923	610,578	718,066	651,892	757,319	737,293	408,562



Aitkin County Health and Human Services

5-Year Trend

	2013	2014	2015	2016	2017	YTD 2018
Fund Balance	5,295,266	4,959,306	4,544,194	4,132,946	4,018,905	3,971,517

	2013	2014	2015	2016	2017	YTD 2018
Revenue:						6,509,713
Tax Levy	(2,470,280)	(1,888,237)	(1,982,478)	(2,376,726)	(2,553,009)	-
Intergovernmental Revenue	(314,824)	(270,042)	(279,448)	(207,004)	(179,511)	-
State Revenue	(686,351)	(881,137)	(1,043,277)	(1,062,714)	(1,140,452)	-
Federal Revenue	(2,136,553)	(2,168,616)	(2,084,504)	(2,047,014)	(2,222,386)	-
Third Party Revenue	(216,749)	(207,346)	(258,635)	(341,275)	(355,350)	-
Misc. Revenue/Pass Thru	(359,291)	(315,012)	(388,502)	(311,493)	(197,534)	-
Expenditure:						6,604,566
Payments for Recipients	1,417,258	1,635,621	1,719,526	1,881,399	1,793,401	-
Payroll	3,425,849	3,664,934	3,934,931	4,102,280	4,272,534	-
Services/Charges and Fees	423,064	336,723	343,675	347,003	370,495	-
Travel and Insurance	89,679	143,562	156,611	155,526	90,227	-
Supplies and Small Equipment	61,402	73,199	110,486	100,869	113,538	-
Capital Outlay	52,492	31,266	38,483	48,764	25,644	-
Misc. Expenditure/Pass Thru	184,723	180,414	150,934	120,507	96,846	-
Net Change to Fund Balance:	(529,581)	335,329	417,802	410,121	114,444	13,853

