

Aitkin County Land Department
209 2nd St. NW Room 206
Aitkin, Mn. 56431
218-927-7364

Certification #SW-FM/COC-000028

Regular Sealed Bid Auction

Tract#: 28 Township: Unorganized - Shovel Lake

Part Summer Access/Part Winter Access

Legal Description: NW¹/₄ NW¹/₄, SW¹/₄ NW¹/₄, Sec. 13, NW¹/₄ NE¹/₄, NE¹/₄ NE¹/₄, Sec. 14,
Twp. 52, Rge. 27.

ASPEN P/B 250.00 Cords @ 13.50 = 3375.00

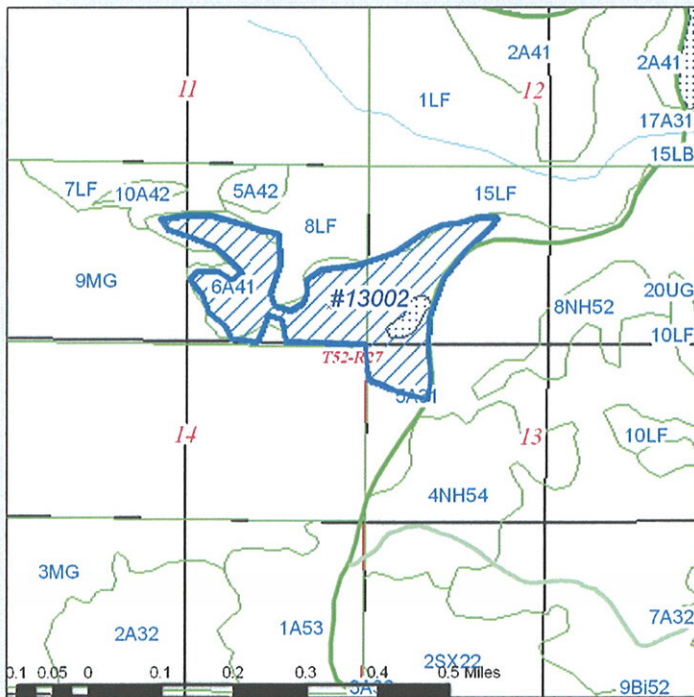
Total Acres = 30 \$3,375.00

Sale Administrator: Dan Gordon 36 month sale.

Down Payment Required: \$506.25

/// Shaded area to be cut. Access rows cut every 40' and thin in between to approximately 60 BA by releasing crop trees. No damage to remaining trees. Utilize to a 4" top. Stay on slash mat created in cutting lanes. There will be a 50 foot uncut zone from water's edge. No harvesting from 3-15 to 12-1 unless approved by forester. Aspen sold on scale. Snag and den trees left where possible. Pre-harvest meeting required - crop tree specification to be determined by forester.

PERMIT # 13002



GPS Coordinates – UTM
N 5205062
E 445343

**** Purchaser _____ Bid Up _____ ****

Species Code

+ Sold area estimate, * Non-bid, area estimate, # Non-bid, scale Blank: Bid, scale